

# FleetLocator™

VISUAL  
ASSURANCE



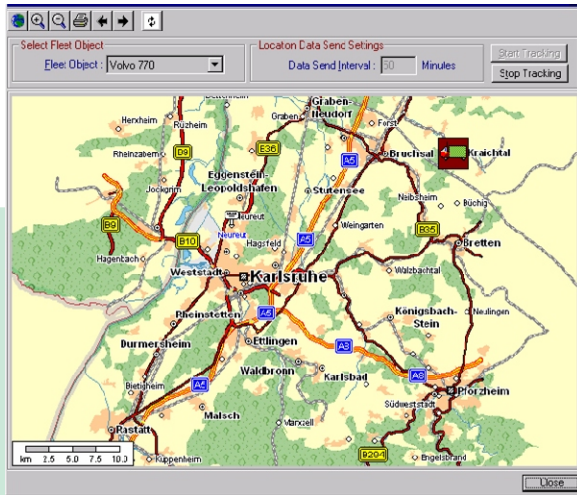
**ADCC**  
TOTAL SOFTWARE SOLUTIONS

## What is Fleet Locator ?

ADCC's Fleet Locator is an integrated system, which independently tracks each vehicle of a fleet on a real time basis. The vehicles are displayed on a digitized map with facility of voice/message communication.

With Fleet Locator you can

- Track vehicles on a digital map.
- Send and receive messages from and to the fleet.
- Generate MIS reports for location, speed, messages etc.
- Zoom, Pan & take a Print of map.
- Query the data using various options.
- Store the data for future analysis

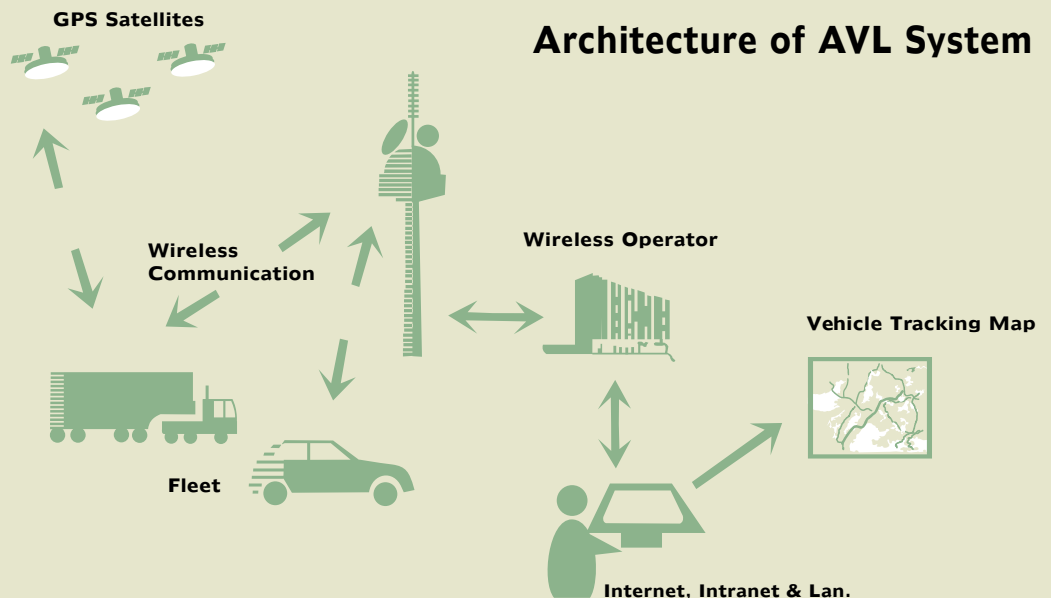


### On Board Units For Vehicles



## How it works?

ADCC's Fleet Locator is based on Global Positioning System (GPS) to get the Position, Speed & Heading. This information is then transferred via RF or GSM or any other communication media to control station. The position is depicted on a digital map using Geographical Information System (GIS).



## Advantages of Fleet Locator in different sectors.

### Transport Services, School Buses & Public Carriers



Automatic online tracking helps transportation & cargo industry to..

- Reduce operating costs by calculating optimum routes, optimize miles driven, toll costs incurred and driver time.
- Take better control over unauthorized usage of fleet.
- Automate booking and despatch reduces passenger/cargo pick up time.
- Help in management of different activities from a user friendly interface.

### Cash Carrying & High Security Vehicles



- Close monitoring and communication for better security and control.
- Continuous tracking of critical vehicle online.
- **Digital Fence** : Route Deviation by the vehicle generates alert alarm.
- Navigating a vehicle to safer place in case of emergency.
- **Call Ahead Feature** to know the arrival of vehicle.

### Police Vehicles



- Online monitoring and communication.
- Navigating vehicle by shortest and fastest route.
- During emergency Fleet Locator helps to plan & coordinate different operations.
- Fleet Locator helps in management of available resources to optimum level.

## Digital Fence

Unique functionality provided to safeguard your vehicle.

- Mark the route for digital fencing.
- Activate the fence.
- Alerts are sent as soon as the vehicle crosses the fence.
- Send the alert to any other responsible person automatically.





Based in the Indian city of Nagpur, ADCC has grown into a premier IT solution provider for a clientele from across the world. Since its inception in 1997, the company has seen a remarkable growth rate. Today it is an ISO 9001 certified solutions company with joint venture companies in Switzerland, USA & Oman



The experience of working in GIS, GPS and Communication field in different countries gives ADCC a unique knowledge base. Also because of extensive experience in software solutions, development and consultancy, ADCC has established for itself an enviable reputation of delivering cutting edge and optimal quality solutions at competitive prices.



At ADCC, we have a simple, one point mission-

**Offering quality & cost effective solutions on time, every time.**



**ADCC USA Inc.**  
7026 Groton Street,  
Forest Hills,  
New York, USA-11375-5102  
Phone No.: 718-544-2772  
Fax No. 718-261-5743  
E-mail : [dwarka@adccindia.com](mailto:dwarka@adccindia.com)

4th Floor, "Madhu Madhav" Towers  
Laxmi - Bhuvan Sq., Dharampeth,  
Nagpur-440 010. INDIA  
Cell No. : + 91-98230-82032.  
Ph.: + 91-712-2552826, 2553946.  
Fax : +91-712-2552811.  
e-mail : [crmg@adccindia.com](mailto:crmg@adccindia.com)  
Visit us at : [www.adccindia.com](http://www.adccindia.com)

**URICH-ADCC Infotech LLC.**  
LLC, Oman P.O. Box 612, Ruwi, PC. 112,  
Sultanate of Oman.  
Phone No.: +968-7711571, 7711676  
Fax No.: +968-7713820  
e-mail : [urich\\_adcc@adccindia.com](mailto:urich_adcc@adccindia.com)  
Website : [www.hasnjuma.com](http://www.hasnjuma.com)

**Overseas Marketing Office at : NEW YORK, SAN JOSE, LONDON, ZURICH & MUSCAT**